



KD Campus Pvt. Ltd

2007, OUTRAM LINES, 1ST FLOOR, OPPOSITE MUKHERJEE NAGAR POLICE STATION, DELHI-110009

Answer-key & Solution

SSC JE (Electrical)
MOCK -(122)
Date:- 11.11.2017

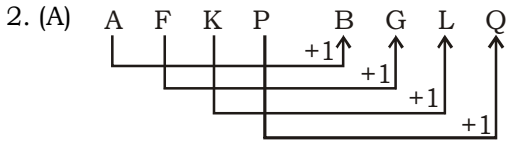
1 B	26 D	51 C	76 A	101 B	126 A	151 A	176 D
2 A	27 B	52 C	77 A	102 B	127 C	152 C	177 A
3 A	28 C	53 B	78 A	103 C	128 B	153 C	178 B
4 C	29 D	54 B	79 C	104 B	129 D	154 A	179 D
5 C	30 C	55 C	80 B	105 C	130 B	155 D	180 A
6 B	31 D	56 A	81 A	106 D	131 D	156 A	181 A
7 A	32 D	57 A	82 D	107 A	132 C	157 C	182 B
8 D	33 *	58 A	83 B	108 D	133 D	158 A	183 D
9 C	34 D	59 A	84 C	109 B	134 B	159 C	184 D
10 C	35 D	60 D	85 B	110 B	135 D	160 A	185 C
11 A	36 B	61 C	86 C	111 D	136 A	161 B	186 C
12 D	37 A	62 C	87 D	112 B	137 A	162 C	187 B
13 D	38 B	63 C	88 A	113 A	138 B	163 D	188 D
14 D	39 B	64 A	89 B	114 A	139 B	164 C	189 A
15 B	40 C	65 A	90 B	115 D	140 B	165 C	190 C
16 D	41 C	66 C	91 D	116 D	141 A	166 D	191 C
17 A	42 D	67 C	92 A	117 C	142 B	167 C	192 D
18 C	43 C	68 B	93 B	118 A	143 A	168 A	193 D
19 C	44 C	69 D	94 A	119 B	144 A	169 D	194 B
20 D	45 C	70 A	95 A	120 D	145 A	170 B	195 C
21 A	46 B	71 C	96 C	121 B	146 D	171 A	196 D
22 B	47 A	72 C	97 B	122 D	147 B	172 D	197 D
23 D	48 B	73 D	98 C	123 B	148 C	173 B	198 A
24 B	49 A	74 D	99 B	124 A	149 C	174 D	199 B
25 C	50 B	75 D	100 B	125 B	150 A	175 A	200 D

Note : If your opinion differ regarding any answer, please message the mock test and Question number to 9560620353

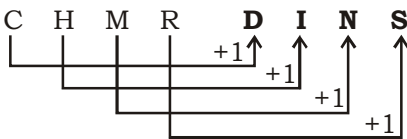
Note : If you face any problem regarding result or marks scored, please contact : 9313111777

SOLUTION SSC JE (Electrical) MOCK TEST no. 122

1. (B) 'Oval' is related to 'Circle' in the same way 'Rectangle' is related to **Square**.



Similarly,



3. (A) $9536 - 6203 = 3333$,

Similarly,

$$? = 5873 - 3333 = 2540$$

4. (C) You enter and exit a highway by a ramp and you enter and exit a house by a **door**.

5. (C) A cub is a young bear, and a joey is a young **kangaroo**.

6. (B) Except Nagpur, all are north indian cities.

7. (A) $72 - 41 = 31$

$$30 - 12 = 18$$

$$51 - 42 = 9$$

$$20 - 11 = 9$$

Except in option (A), the rest of the difference are one of the factor of 9.

8. (D) $F \xrightarrow{+3} I \xrightarrow{+2} K$

$D \xrightarrow{+3} G \xrightarrow{+2} I$

$M \xrightarrow{+3} P \xrightarrow{+2} R$

$K \xrightarrow{+3} N \xrightarrow{-10} D$

9. (C) Kennel is a shelter for a pet dog, stable is a shelter for horses. Den is a living place of lion. But lock is used for safety of a door.

10. (C) $4 \times 8 + 3 = 32 + 3 = 35$

$$7 \times 6 + 7 = 42 = 42 + 7 = 49$$

$$9 \times 8 + 9 = 72 + 9 = \mathbf{81}$$

11. (A) $(7)^2 + (5)^2 + (3)^2 = 49 + 25 + 9 = 83$

$$(6)^2 + (4)^2 + (2)^2 = 36 + 16 + 4 = 56$$

$$(8)^2 + (9)^2 + (1)^2 = 64 + 81 + 1 = \mathbf{146}$$

12. (D) Only son of woman's grandfather means father of that woman.

Father of woman is the father of man's brother and hence father of that man.

Therefore, the woman is sister of the man in photograph.

13. (D) $12 \times 2 + 3 = 27$

$$27 \times 3 + 4 = 85$$

$$85 \times 4 + 5 = 345$$

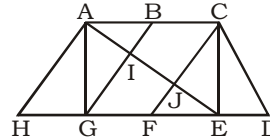
$$345 \times 5 + 6 = \mathbf{1731}$$

14. (D) Comparing (i) and (iii) dice we have,

Top	3	2	1
Bottom	4	5	6

15. (B) Some teachers may be writers or musician and vice-versa.

16. (D) The figure may be labelled as shown.



Simple triangles are AHG, AIG, AIB, JFE, CJE and CED i.e. 6 in number.

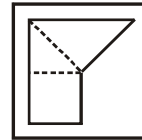
Triangles composed of two components each are ABG, CFE, ACJ and EGI i.e. 4 in number.

Triangles composed of three components each are ACE, AGE and CFD i.e. 3 in number.

There is only one triangle i.e. AHE composed of four components.

Therefore, There are $6 + 4 + 3 + 1 = 14$ triangles in the given figure.

17. (A)



18. (C) Let x and y be the ten's and unit's digits of the woman's age.

Then, woman's age = $(10x + y)$ years;

husband's age = $(10y + x)$ years.

$$\text{Therefore } (10y + x) - (10x + y) = (1/11)(10y + x + 10x + y)$$

$$\Rightarrow (9y - 9x) = (1/11)(11y + 11x) = (x + y)$$

$$\Rightarrow 10x = 8y \Rightarrow x/y = 4/5$$

$$\Rightarrow 10x + y = 10 \times 4 + 5 = 45$$

19. (C)

20. (D)

21. (A)

22. (B) $W \xrightarrow{+5} B \xrightarrow{+9} K \xrightarrow{+6} Q \xrightarrow{+7} X \xrightarrow{+1} Y \xrightarrow{+7} F$

$W \xrightarrow{+2} Y \xrightarrow{+3} B \xrightarrow{+4} F \xrightarrow{+5} K \xrightarrow{+6} Q \xrightarrow{+7} X$

$Y \xrightarrow{+3} B \xrightarrow{+15} Q \xrightarrow{+0} Q \xrightarrow{-11} F \xrightarrow{+2} H \xrightarrow{+6} N$

$W \xrightarrow{+3} Z \xrightarrow{+3} C \xrightarrow{+5} H \xrightarrow{+2} J \xrightarrow{+3} M \xrightarrow{+4} Q$

23. (D) $5 \times 8 = 28 \rightarrow 5 \times 8 = 40 \rightarrow 5 + 8 = 13$,

$$13 - 1 = 12 \rightarrow 40 - 12 = 28$$

$$3 \times 7 = 21 \rightarrow 3 \times 7 = 21 \rightarrow 3 + 7 = 10,$$

$$10 - 1 = 9 \rightarrow 21 - 9 = 12$$

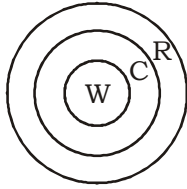
$$8 \times 6 = 35 \rightarrow 8 \times 6 = 48 \rightarrow 8 + 6 = 14,$$

$$14 - 1 = 13 \rightarrow 48 - 13 = 35$$

$$13 \times 13 = ? \rightarrow 13 \times 13 = 169 \rightarrow 13 + 13 = 26,$$

$$26 - 1 = 25 \rightarrow 169 - 25 = 144$$

24. (B)



1. 3 2. 5

25. (C)

26. (D) A **bracelet** is worn around the wrist, and a belt is worn around the waist.

27. (B) A vamp is part of a shoe, and a hood is part of a **car**.

28. (C) A **haiku** is a type of poem, and a fable is a type of story.

29. (D) $\frac{18 \times 18}{2} = \frac{324}{2} = 162$

Similarly,

$$\frac{36 \times 36}{2} = \frac{1296}{2} = 648$$

30. (C) Loss of memory is referred to as Amnesia. Similarly, loss of movement is referred to as Paralysis.

31. (D) The number 125 is a perfect cube.
 $5 \times 5 \times 5 = 125$

32. (D) The scientific study of the second is called the first in all the pairs except D.

33. (B) Except (B), In others second is a part of first whereas chair and sofa are different types.

34. (D) $5 + 2 = 7$, $6 + 3 = 9$, $2 + 4 = 6$
But $3 + 5 = 8 \neq 6$

35. (D) a **b** c / **c** b a / a b **c** / c b **a**

13	8	9	17	14	22	
↓	↓	↓	↓	↓	↓	
M	H	I	Q	N	V	
1	12	7	5	2	18	1
↓	↓	↓	↓	↓	↓	↓
A	L	G	E	B	R	A
4	21	7	18	13	1	
↓	↓	↓	↓	↓	↓	
D	U	G	R	M	A	

37. (A)

C	A	R	S	I	T	W	E	L	L
↓	↓	↓	↓	↓	↓	↓	↓	↓	↓
∅	α	δ	η	ψ	κ	σ	i	γ	γ
M	A	P	γ	α	μ	β			
↓	↓	↓	↓	↓	↓	↓			
μ	α	β	So,	L	A	M	P		

38. (B) $13 * 12 * 5 * 4 \rightarrow 13 = 12 + 5 - 4 = 17 - 4$

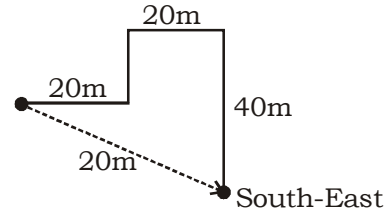
39. (B) $\frac{225}{15} = 15 \rightarrow 15 \times 2 = 30$

$$\frac{70}{7} = 10 \rightarrow 10 \times 2 = 20$$

$$\frac{?}{3} = \frac{8}{2} \rightarrow 2 \times ? = 8 \times 3$$

$$\therefore \frac{24}{2} = 12$$

40. (C)



It is clear from the diagram that I am in south-east direction with respect to the original position.

41. (C)

S	E	Q	U	E	N	C	E
↓	↓	↓	↓	↓	↓	↓	↓
H	V	J	F	V	M	X	V

Opposite Letters

Similarly,

C	H	I	L	D	R	E	N
↓	↓	↓	↓	↓	↓	↓	↓
X	S	R	O	W	I	V	M

42. (D) Suppose present age of Mrs. Lata = x years
Present age of son = y years;

$$\therefore x + y = 64 \quad \dots(i)$$

According to the question, $x - 8 = 3(y - 8)$

$$\rightarrow x - 8 = 3y - 24 \rightarrow x - 3y = -16 \quad \dots(ii)$$

From equations (i) and (ii), $y = 20$;

$$\therefore \text{Age of Mrs. Lata} = 64 - 20 = 44 \text{ years}$$

43. (C) $5 \times 2 + 1 = 11$

$$11 \times 2 - 1 = 21$$

$$21 \times 2 + 1 = 43$$

$$43 \times 2 - 1 = 85$$

$$85 \times 2 + 1 = \mathbf{171}$$

44. (C) $A \xrightarrow{+3} D \xrightarrow{+3} G \xrightarrow{+3} J$

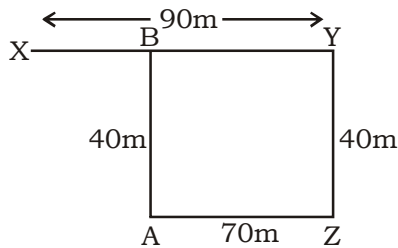
$Y \xrightarrow{-3} V \xrightarrow{-3} S \xrightarrow{-3} P$

$K \xrightarrow{+3} N \xrightarrow{+3} Q \xrightarrow{+3} T$

Similarly,

$O \xrightarrow{-3} L \xrightarrow{-3} I \xrightarrow{-3} F$

45. (C)



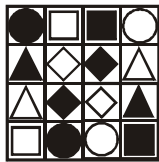
Required distance = $XB = 90 - 70$
= 20 metre

46. (B) Clearly, assumption I is implicit in the statement. It is mentioned that the values of an educated will differ from that of an uneducated person. It does not imply that an uneducated person will not have value.

47. (A)

48. (B)

49. (A)



50. (B) L.C.M. of 6, 5, 7, 10 and 12 is 420.

So, the bells will ring together after every 420 seconds i.e. 7 minutes.

Now, $7 \times 8 = 56$ and $7 \times 9 = 63$.

Thus, in 1 hour (or 60 minutes), the bells will toll together 8 times, excluding the one at the start.

51. (C) Gandhiji's greatest contribution to the social thought of this century is perhaps his insistence on decentralization of the means of production (economic power). According to him, large-scale industrialism is at the centralization of political power in few hands. It is in the nature of large-scale industries to centralize economic power in the hands of a few individuals. Under capitalism this power comes to be concentrated in the hands of individual capitalists and under socialism, it is arrogated by managers, technocrats and bureaucrats.

53. (B) The Control Panel is a part of the Microsoft Windows graphical user interface which allows users to view and manipulate basic system settings and controls via applets such as adding hardware, adding and removing software, controlling user accounts and changing accessibility options.

54. (B) Chondrichthyes or cartilaginous fishes are jawed fish with paired fins, paired nares, scales, a two-chambered heart,

and skeletons made of cartilage rather than bone. The cartilaginous fish are so named because their skeleton is composed of cartilage which is not reinforced by the minerals that make bone. It includes elasmobranchs: sharks, rays and skates etc.

55. (C) The Kalinga Prize for the Popularization of Science is an award given by UNESCO for exceptional skill in presenting scientific ideas to lay people. It was created in 1952, following a donation from Biju Patnaik, Founder President of the Kalinga Foundation Trust in India.

58. (A) Per capita income or average income or income per person is the mean income within an economic aggregate, such as a country or city. It is calculated by taking a measure of all sources of income in the aggregate (such as GDP or Gross National Income) and dividing it by the total population.

59. (A) The Sargasso Sea is a region in the gyre in the middle of the North Atlantic Ocean. The Sargasso Sea is home to seaweed of the genus Sargassum (origin of its name).

61. (C) To be eligible for membership in the Lok Sabha, a person must be a citizen of India and must be of 25 years of age or older, mentally sound, should not be bankrupt and should not be criminally convicted. The minimum age for a person to become a member of Rajya Sabha is 30 years.

62. (C) Visakhapatnam Urban Development Authority (VUDA), in collaboration with Indian Navy's Eastern Naval Command. It has set up India's first ship museum in the port city. The ship museum has been set up at Teneti Park abutting the Rama Krishna beach on the lines of 'INS Kurusura submarine museum' that was set up by the Indian Navy in August 2002.

63. (C) Numbers of Neutrons in ${}_{33}\text{Al}^{47} = 47 - 33$
= 14

64. (A) Sarkaria Commission was set up in June 1983. Commission's charter was to examine the relationship and balance of power between state and central governments in the country and suggest changes within the framework of Constitution of India. The Commission was so named as it was headed by Justice Rajinder Singh Sarkaria, a retired judge of the Supreme Court of India. The other two members of the committee were Shri B Sivaraman and Dr S R Sen.

65. (A) Eutrophication is the ecosystem response to the addition of artificial or natural substances, such as nitrates and

- phosphates, through fertilizers or sewage, to an aquatic system. One of its example is the "bloom".
67. (C) Iodized salt which is also spelled iodised salt, is table salt mixed with a minute amount of various salts of the element iodine. The ingestion of iodide prevents iodine deficiency. Worldwide, iodine deficiency affects about two billion people and is the leading preventable cause of mental retardation. Deficiency also causes thyroid gland problems, including "endemic goitre." In many countries iodine deficiency is a major public health problem that can be cheaply addressed by purposely adding small amounts of iodine to the sodium chloride salt.
69. (D) John McCloy was the Bank's President at that time when world bank loan was received by France.
72. (C) The peanuts or groundnut (*Arachis hypogaea*), is a species in the legume "bean" family (*Fabaceae*). The cultivated peanut was first domesticated in the valleys of Peru. It is an annual herbaceous plant growing tall.
78. (A) Gopal Hari Deshmukh was a social reformer from Maharashtra. At age of 25, Deshmukh started in the weekly *Prabhakar* under the pen name *Lokhitawadi*. In the first two years, he penned 108 articles on social reform. That group of articles has come to be known in Marathi literature as *Lokhitawadinchi Shatapatre*.
80. (B) He used cannon and ammunition from the Portuguese to attack the English. In June 1661, Shivaji's soldiers plundered *Rajapur* and captured several Englishmen. This was payback for the English aid to *Bijapur*. The following year, he captured a band of Englishmen in *Surat* for supplying ammunition to his enemies.
86. (C) OMOs are the market operations conducted by the Reserve Bank of India by way of sale/purchase of Government securities to/ from the market with an objective to adjust the rupee liquidity conditions in the market on a durable basis.
88. (A) Shortly after blackbody radiation was understood, it was noticed that the spectra of stars look extremely similar to blackbody radiation curves of various temperatures.

91. (D) Fiber glass is a fiber reinforced polymer made of a plastic matrix reinforced by fine fibers of glass. It is also known as GFK. Fiber glass is a light weight, extremely strong and robust material. Although strength properties are somewhat lower than carbon fiber and it is less stiff, also the material are much less expensive. Its bulk strength and weight properties are very favourable when compared to metals and it can be easily formed using molding processes. Common uses of fiberglass include high performance aircrafts (gliders), boats, automobiles, baths, hot tubs, water tanks, roofing, pipes, cladding, casts, surfboards and external door skins.
94. (A) The electrocardiogram (ECG or EKG) is a diagnostic tool that measures and records the electrical activity by electrodes placed on the skin. The electrocardiogram can measure the rate and rhythm of the heartbeat, as well as provide indirect evidence of blood flow to the heart muscle.
99. (B) Text can be aligned with one or both edges of a text frame. Text is said to be justified when it is aligned with both edges. We can justify text in a paragraph including the last line.
100. (B) The ABO blood group system is widely credited to have been discovered by the Austrian scientist *Karl Landsteiner*, who found three different blood types in 1900; he was awarded the Nobel Prize in Physiology or Medicine in 1930 for his work.
161. (B) By KCL,

$$I_p + I_o + I_c + I_L = 0$$

$$2 + 1 + I_c + I_L = 0$$
 But, $I_c = C \times dv/dt$

$$= 1 \times d/dt (4 \sin 2t)$$

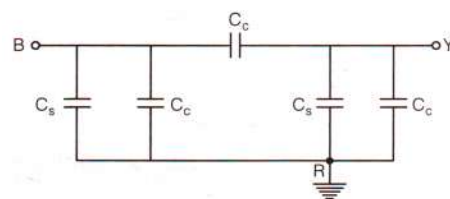
$$= (8 \cos 2t)$$

$$\therefore I_L = -(2 + 1 + 8 \cos 2t)$$

$$= -3 - 8 \cos 2t$$

$$\therefore V_L = L (di/dt) = 2 \times 2 \times 8 \sin 2t$$

$$= 32 \sin 2t$$
 Note : KCL is based on the law of conservation of charges.
162. (C) given circuit can be redrawn as



$$C_{BY} = \frac{C_s + C_c}{2} + C_c = \frac{C_s + 3C_c}{2}$$

163. (D) $Q = \frac{\text{Resonance freq.}}{\text{Bandwidth}} = \frac{f_o}{\Delta f} = \frac{100}{5} = 20$

∴ At resonance,
 $|V_L| = |V_C| = Q \cdot |V_{\text{source}}|$
 $\therefore |V_L| \cdot 20 \times 10 = 200 \text{ V}$

164. (C) ∴ Ideal voltage has zero internal resistance,

∴ Time constant $\tau = RC = 0$
 Hence capacitor will charge instantaneously.

165. (C) Thermocouple type, instruments read rms value,

$$I_{\text{rms}} = \sqrt{2^2 + \left(\frac{\sqrt{2}}{\sqrt{2}}\right)^2 + \left(\frac{2\sqrt{2}}{\sqrt{2}}\right)^2} \text{ A}$$

For class 1 meter, accuracy is 1% for 5 A range.

For 3 A, accuracy will be $\frac{5}{3}\% = 1.67\%$

170. (B) Maximum value of input voltage

$$V_m = 400\sqrt{2} \text{ V}$$

Since load is purely resistive, therefore peak instantaneous output voltage

$$V_m = 400\sqrt{2} \text{ V}$$

172. (C) When V will be +ve both transistor and diode will be on making V across them zero and current I will be flow and when V is -ve both will be off offering infinite resistance so current I will be zero.

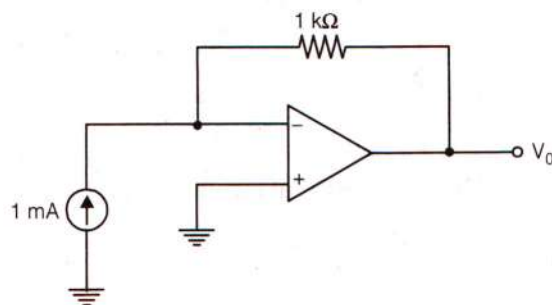
173. (B) $Y = (\overline{P \cdot Q}) \cdot (\overline{R \cdot S})$

$$\therefore (\overline{A \cdot B}) = (A + B)$$

$$\therefore Y = \overline{P \cdot Q} + \overline{R \cdot S}$$

$$\Rightarrow Y = (P + Q + R + S)$$

174. (D)



$$0 - V_o = 1 \text{ mA} \times 1 \text{ k}\Omega$$

$$V_o = -1 \text{ V}$$

177. (A) At no load $I_a = 5 - \frac{400}{200} = 3 \text{ A}$

$$\therefore \text{Speed at no-load } N_{nl} = \frac{400 - 3 \times 0.5}{k}$$

At full load $I = 50 - 2 = 48 \text{ A}$

$$\therefore \text{Speed at full-load } N_n = \frac{400 - 48 \times 0.5}{k}$$

$$\therefore \frac{N_n}{N_{nl}} = 0.94$$

180. (A) $N_s = \frac{120 \times 50}{8} = 750 \text{ rpm}$

$$\therefore s = \frac{750 - 727.5}{750} = 0.03$$

$$\therefore \text{Slip frequency of rotor emf} = sf = 0.03 \times 50 = 1.5 \text{ Hz}$$

182. (B) $E = \frac{1}{2} Li^2 = \frac{1}{2} \left(\frac{N\phi}{i} \right) i^2$

$$= \frac{1}{2} \times 1000 \times 10^{-3} \times 1 = \frac{1}{2} \text{ J}$$

191. (C) $q = C \cdot V$

$$\therefore \frac{dq}{dt} = i = C \cdot \frac{dv}{dt}$$

(dvl at would be negative as current would decrease)

$$\text{also, } v = iR = C \cdot \frac{dv}{dt} \cdot R$$

$$\therefore -50 = 20 \times 10^{-6} \times (-500) \times R$$

$$\Rightarrow R = 5 \text{ k}\Omega$$

192. (D) For maximum power

$$|X_c| = R$$

$$\phi = 45^\circ$$

$$\cos \phi = \cos 45^\circ = 0.707 \text{ led}$$

194. (B) $(b - n + 1)$ links associated with fundamental loops. So $b - n + 1 = 10 - 7 + 1 = 4$

195. (C) $v = L \frac{di}{dt}$

$$\Rightarrow \int_{-\infty}^{\infty} v dt = \int_0^i L di$$

$$\int_{-\infty}^{\infty} \delta(t) dt = \int_0^i L di$$

$$1 = Li$$

$$\Rightarrow i = \frac{1}{L} = 1 \text{ A}$$

Energy supplied by source = energy and forced in the inductor

$$= \frac{1}{2} Li^2 = \frac{1}{2} \times 1 \times (1)^2 = \frac{1}{2} \text{ J}$$

199. (B) $H = \frac{\text{Stored kinetic energy}}{\text{Machine rating}}$

$$= \frac{400 \times 10^6}{50 \times 10^6} = 8 \text{ MJ/MVA}$$