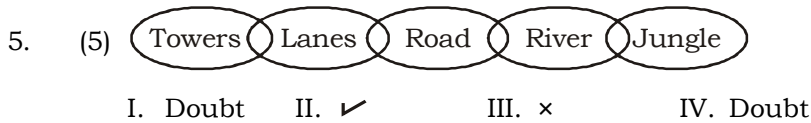
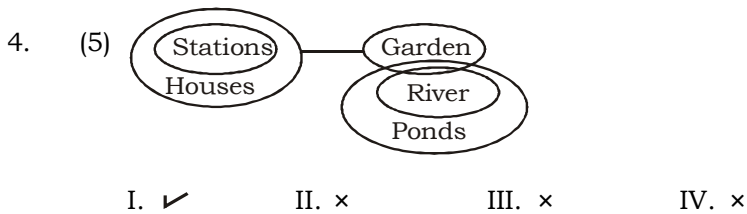
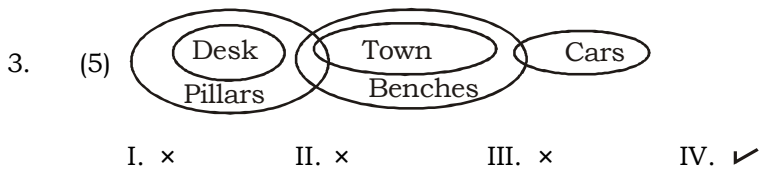
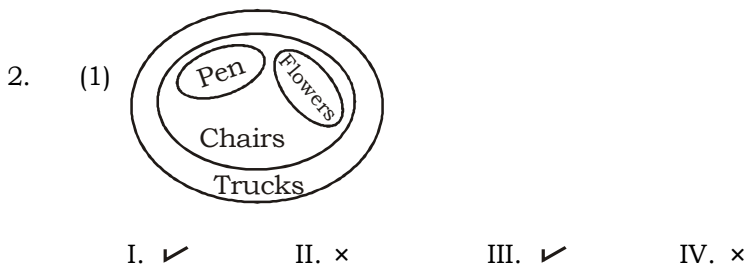
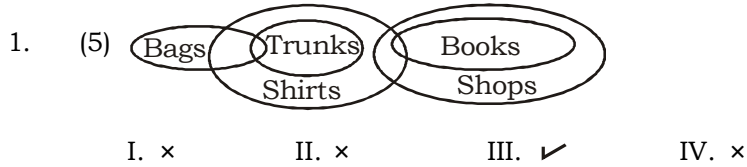


IBPS PO SPECIAL PHASE - I - 356 (SOLUTION)

REASONING

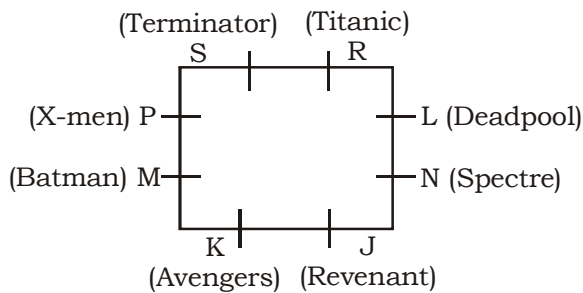
(1-5) :



(6-11) :

6. (4) 7. (5) 8. (5) 9. (4) 10. (5) 11. (3)

(12-16) :



12. (5) 13. (4) 14. (4) 15. (2) 16. (3)



Campus KD Campus

2007, OUTRAM LINES, 1ST FLOOR, OPPOSITE MUKHERJEE NAGAR POLICE STATION, DELHI-110009

35. (1) **Conclusions :**

I. $U > L \longrightarrow \text{True}$

II. $G \leq L \longrightarrow \text{False}$

MATHS

36. (2) $95^2 \approx 95^4 \div 95^1$
 $95^2 = 95^{4-1} = 95^3$
 $? \approx 3$

37. (2) $? \approx \sqrt{10000} + \frac{3}{5} \times 1892$
 $= 100 + 1135.2 = 1235.2 \approx 1230$

38. (3) $? \approx \frac{0.0004}{0.0001} \times 36 = 4 \times 36 = 144 \approx 145$

39. (1) $? = 12345 \times \frac{137}{100} = 16912.65 \approx 17000$

40. (3) $? = 3739 + 164 \times 27$
 $= 3739 + 4428 = 8167 \approx 8200$

41. (1) Required average = $\frac{250 + 550 + 400}{3} = \frac{1200}{3} = 400$

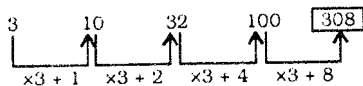
42. (5) Number of valid votes polled by males = $7600 - 1875 = 5725$

43. (4) Required average = $\frac{2250 + 7600 + 4250}{3} = \frac{14100}{3} = 4700$

44. (3) Required % = $\left(\frac{2500}{6720} \times 100\right)\% = 37.20\% \approx 37\%$

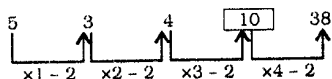
45. (2) Required % = $\left(\frac{8000 - 4600}{8000} \times 100\right)\% = 42.50\%$

46. (3) The given series is based on the following pattern:



Hence, 308 will come in place of question mark.

47. (5) The given series is based on the following pattern:



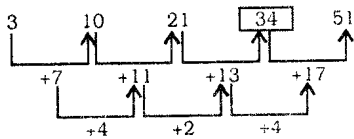
Hence, 10 will come in place of question mark.

48. (2) The given series is based on the following pattern:

$5 \times 1 + (1)^2 = 6$
 $6 \times 2 + (2)^2 = 16$
 $16 \times 3 + (3)^2 = 57$
 $57 \times 4 + (4)^2 = 244$

Hence, 16 will come in place of question mark.

49. (1) The given series is based on the following patterns.



Hence, 34 will come in place of question mark.

50. (4) The given series is based on the following pattern:

$$5 \times 2 + 1 = 11$$

$$11 \times 2 + 3 = \mathbf{25}$$

$$25 \times 2 + 5 = 55$$

$$55 \times 2 + 7 = 117$$

51. (5) According to the question,

$$\text{Sum of five numbers} = 5 \times 306.4 = 1532$$

$$\text{Third number} = 1532 - 2 \times 431 - 2 \times 214.5$$

$$= 1532 - 862 - 429 = 241$$

52. (2) $SI = \frac{15000 \times 9 \times 2}{100} = ₹ 2700$

$$CI = 12000 \left[\left(1 + \frac{8}{100} \right)^2 - 1 \right] = 12000 \left[\left(\frac{27}{25} \right)^2 - 1 \right]$$

$$= 12000 \left[\frac{729 - 625}{625} \right] = 12000 \times \frac{104}{625} = ₹ 1996.8$$

$$\therefore \text{Total interest earned} = ₹ (2700 + 1996.8) = ₹ 4696.8$$

53. (1) Let the listed price be ₹ x .

$$\text{Discount} = 30\% \text{ of } x = \frac{30x}{100} = ₹ \frac{3x}{10}$$

According to the question,

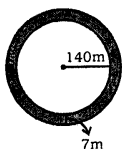
$$\frac{3x}{10} = 82.5$$

$$x = \frac{82.5 \times 10}{3} = ₹ 275$$

$$\therefore \text{Required cost price of calculator} = 70\% \text{ of } 275 = ₹ \frac{70 \times 275}{100} = ₹ 192.50$$

54. (2) Required time = LCM of 18, 24 and 32 seconds = 288 seconds.

55. (5)



Radius of the field = 140 m

Width of garden = 7 m

$$\text{Area of garden} = \pi (147^2 - 140^2)$$

$$= \frac{22}{7} (147 + 140) (147 - 140) = 22 \times 287 = 6314 \text{ m}^2$$

$$\text{Required cost} = ₹ (21 \times 6314) = ₹ 132594$$



Campus KD Campus

2007, OUTRAM LINES, 1ST FLOOR, OPPOSITE MUKHERJEE NAGAR POLICE STATION, DELHI-110009

56. (4) Required % = $\left(\frac{760}{2640} \times 100\right)\% = 28.78\% \approx 28\%$
57. (3) Required difference = $(440 + 760) - (260 + 320) = 1200 - 580 = 620$
58. (2) Required ratio = $(340 + 320 + 440) : (320 + 660 + 440) = 1100 : 1420 = 55 : 71$
59. (5) Required ratio = $440 \times \frac{110}{100} : 760 \times \frac{115}{100} = 484 : 874 = 242 : 437$
60. (3) Required difference
$$= \left(\frac{340 + 480 + 320 + 750 + 440 + 760}{6}\right) - \left(\frac{260 + 320 + 420 + 660 + 540 + 440}{6}\right)$$
$$= 520 - 440 = 80$$
66. (5) I. $p^2 + 3p + 2p + 6 = 0$
 $p(p + 3) + 2(p + 3) = 0$
 $(p + 3)(p + 2) = 0$
 $p = -2$ or -3
II. $q^3 + q + 2q + 2 = 0$
 $q(q + 1) + 2(q + 1) = 0$
 $(q + 1)(q + 2) = 0$
 $q = -1$ or -2
Obviously $p \leq q$
67. (4) I. $p = \pm 2$
II. $q^2 + 2q + 2q + 4 = 0$
 $q(q + 2) + 2(q + 2) = 0$
 $(q + 2)(q + 2) = 0$
 $q = -2$
Obviously, $p \geq q$
68. (2) I. $p^2 + p - 56 = 0$
 $p^2 + 8p - 7p - 56 = 0$
 $p(p + 8) - 7(p + 8) = 0$
 $(p + 8)(p - 7) = 0$
 $p = 7$ or -8
II. $q^2 - 8q - 9q + 72 = 0$
 $q(q - 8) - 9(q - 8) = 0$
 $(q - 8)(q - 9) = 0$
 $q = 8$ or 9
Obviously, $p < q$
69. (1) We have,
 $3p + 2q = 58$... (i)
 $4p + 4q = 92$
 $2p + 2q = 46$... (ii)
By equation (i) - (ii) we get
 $p = 12$
From equation (i),
 $3 \times 12 + 2q = 58$
 $2q = 58 - 36 = 22$
 $q = 11$
Hence, $p > q$

70. (2) I. $3p^2 + 15p + 2p + 10 = 0$

$$3p(p + 5) + 2(p + 5) = 0$$

$$(p + 5)(3p + 2) = 0$$

$$p = -5 \text{ or } -\frac{2}{3}$$

II. $10q^2 + 5q + 4q + 2 = 0$

$$5q(2q + 1) + 2(2q + 1) = 0$$

$$(2q + 1)(5q + 2) = 0$$

$$q = -\frac{1}{2} \text{ or } -\frac{2}{5}$$

Obviously, $p < q$

ENGLISH LANGUAGE

96. (4) Replace 'their' with 'its' as it is used for 'airline', which is singular.
97. (1) Replace 'began' with 'begun' as the 3rd form of verb is used in Present Perfect Tense.
98. (3) Replace 'confident' with 'confidence'.
99. (1) Replace 'Inspite' with 'Despite the fact'.
100. (4) Replace 'invested' with 'investing'.

VOCABULARIES

Words	Meaning in English	Meaning in Hindi
Conceive	in your mind; to imagine something	कल्पना करना
Potent	having great power, influence, or effect	प्रबल, प्रभावयुक्त
Inducing	succeed in persuading or influencing (someone)	प्रेरित करना
	to do something	
derogative	showing a critical or disrespectful attitude	अपमानजनक
Augmenting	to increase the amount, value, size of something	वृद्धि करना
Venture	a risky or daring journey or undertaking	उद्यम करना
Apparent	clearly visible or understood; obvious	स्पष्ट रूप से
Plague	a contagious bacterial disease characterized	
	by fever and delirium	प्लेग
Enormous	very large in size, quantity, or extent	विशाल



Campus
KD Campus

2007, OUTRAM LINES, 1ST FLOOR, OPPOSITE MUKHERJEE NAGAR POLICE STATION, DELHI-110009

IBPS PO SPECIAL PHASE - I - 356 (ANSWER KEY)

- | | | | |
|---------|---------|---------|----------|
| 1. (5) | 26. (3) | 51. (5) | 76. (2) |
| 2. (1) | 27. (2) | 52. (2) | 77. (4) |
| 3. (5) | 28. (4) | 53. (1) | 78. (1) |
| 4. (5) | 29. (4) | 54. (2) | 79. (2) |
| 5. (2) | 30. (2) | 55. (5) | 80. (1) |
| 6. (4) | 31. (1) | 56. (4) | 81. (2) |
| 7. (4) | 32. (1) | 57. (3) | 82. (3) |
| 8. (5) | 33. (1) | 58. (2) | 83. (5) |
| 9. (4) | 34. (4) | 59. (5) | 84. (3) |
| 10. (5) | 35. (1) | 60. (3) | 85. (1) |
| 11. (3) | 36. (5) | 61. (1) | 86. (5) |
| 12. (5) | 37. (2) | 62. (2) | 87. (3) |
| 13. (4) | 38. (3) | 63. (4) | 88. (4) |
| 14. (4) | 39. (1) | 64. (2) | 89. (2) |
| 15. (2) | 40. (3) | 65. (4) | 90. (2) |
| 16. (3) | 41. (1) | 66. (5) | 91. (4) |
| 17. (5) | 42. (5) | 67. (4) | 92. (5) |
| 18. (1) | 43. (4) | 68. (2) | 93. (3) |
| 19. (1) | 44. (3) | 69. (1) | 94. (5) |
| 20. (3) | 45. (2) | 70. (2) | 95. (5) |
| 21. (2) | 46. (3) | 71. (5) | 96. (4) |
| 22. (2) | 47. (5) | 72. (3) | 97. (1) |
| 23. (1) | 48. (2) | 73. (4) | 98. (3) |
| 24. (4) | 49. (1) | 74. (5) | 99. (1) |
| 25. (2) | 50. (4) | 75. (3) | 100. (4) |