

SBI CLERK PHASE - I MOCK TEST-42 (SOLUTION)

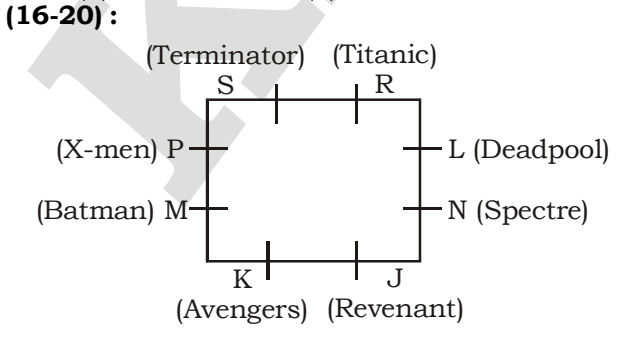
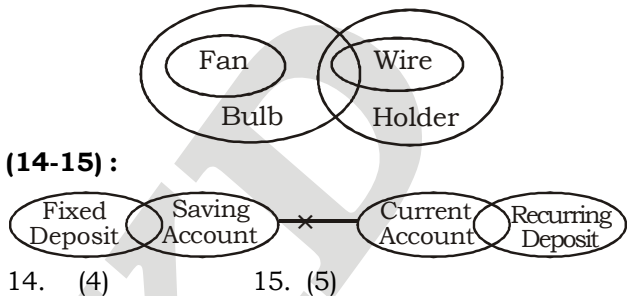
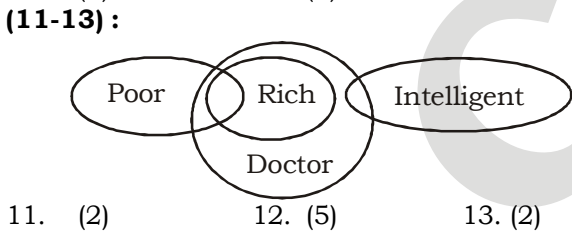
REASONING

Solutions (1-5) :

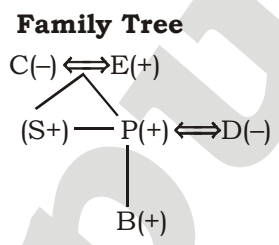
@ - ≥ \$ - ≤ % - > # - < © - =

- 1. (4) **Statement :**
A ≥ H < C ≤ D
Conclusions :
I. D > A II. C > A
- 2. (2) **Statement :**
L ≤ N ≥ K > Q
Conclusions :
I. K = L II. Q < N
- 3. (4) **Statement :**
J > F < R ≥ H
Conclusions :
I. H < F II. J > R
- 4. (3) **Statement :**
Q = P ≤ O > N
Conclusions :
I. O = Q II. O > Q
- 5. (1) **Statement :**
D < C > B = A
Conclusions :
I. A < C II. B < D

- (6-10) :**
6. (3) 7. (5) 8. (3)
9. (4) 10. (1)



16. (5) 17. (4) 18. (4)
19. (2) 20. (3)
(21-22) :



21. (5) 22. (1)
(23-27) :
- | | | |
|--------|---|-----|
| Market | : | Zo |
| going | : | Pit |
| is | : | ch |
| all | : | ha |
| are | : | sit |
| far | : | jo |
| too | : | Fa |
| not | : | na |
| for | : | sa |
| he | : | la |

23. (1) 24. (3) 25. (2)
26. (2) 27. (1)

(28 : 32) :

| Floor | Person |
|-------|-----------|
| 7 | Ishu |
| 6 | Golu |
| 5 | Heena |
| 4 | Karan |
| 3 | Lalu/Alka |
| 2 | Javed |
| 1 | Lalu/Alka |

28. (4) 29. (2) 30. (3)
31. (2) 32. (4)

(33 - 35) :

Fagal > Baby > Alfaq > Deepak > Chahat > Esha

18 13 7

33. (4) 34. (2) 35. (1)

Maths

36. (1) ? = $\sqrt{8^2 \cdot 7 \cdot (5)^2 - 175}$
= $\sqrt{(8 \cdot 5)^2 \cdot 7 - 175}$
= $\sqrt{11200 - 175}$
= $\sqrt{11025} = 105$

37. (4) $(0.5^3)^3 \div (0.5^2)^2 \times (0.5)^2 = (0.5)^{2-3}$
 p $(0.5)^9 \div (0.5)^4 \times (0.5)^2 = (0.5)^{2-3}$
 p $(0.5)^{9-4+2} = (0.5)^{2-3}$
 p $(0.5)^7 = (0.5)^{2-3}$
 p $? - 3 = 7$ p $? = 3 + 7 = 10$

38. (1) $\frac{800 \div 64.5}{100} + \frac{1500 \div 36.4}{100}$
 = $?^2 + 38$
 p $516 + 546 = ?^2 + 38$
 p $1062 = ?^2 + 38$
 p $?^2 = 1062 - 38 = 1024$
 p $? = \sqrt{1024} = 32$

39. (2) $567 - \frac{4824}{134} = ? \times 9$
 p $567 - 36 = ? \times 9$
 p $? \times 9 = 531$
 □ $? = \frac{531}{9} = 59$

40. (5) $4 + \frac{5}{6} - 5 - \frac{5}{9}$
 = $? - 2 - \frac{1}{3} + \frac{11}{18}$
 p $? = 4 - 5 + 2 + \frac{5}{6} - \frac{5}{9} + \frac{1}{3} - \frac{11}{18}$
 = $1 + \frac{5 \cdot 3 - 10 + 6 - 11}{18}$
 = $1 + 0 = 1$

41. (2) The pattern of the number series is :
 $13 + 3 = 16$
 $16 + (3 + 3) = 22$
 $22 + (6 + 3) = 31$
 $33 + (11 + 7) = 51$
 $51 + (18 + 9) = \mathbf{78}$

42. (3) The pattern of the number series is :
 $39 + 1 \times 13 = 52$
 $52 + 2 \times 13 = 78$
 $78 + 3 \times 13 = 117$
 $117 + 4 \times 13 = 169$
 $169 + 5 \times 13 = 234$

43. (2) The pattern of the number series is :
 $62 + 5^2 = 62 + 25 = 87$
 $87 + 10^2 = 87 + 100 = 187$
 $187 + 15^2 = 187 + 225 = 412$
 $412 + 20^2 = 412 + 400 = 812$
 $812 + (25)^2 = 812 + 625 = 1437$

44. (1) The pattern of the number series is :
 $7 + 1^2 = 8$
 $8 + 4^2 = 24$
 $24 + 9^2 = 105$
 $105 + 16^2 = 361$
 $361 + 25^2 = \mathbf{986}$

45. (1) The pattern of the number series is :
 $656 - 224 = 432$

$432 - 112 = 320$
 $320 - 56 = 264$
 $264 - 28 = 236$
 $236 - 14 = \mathbf{222}$

46. (5) Present age of Ram's son = x years.
 □ Ram's present age = $3x$ years
 Ram's father's present age = $\frac{15x}{2}$ years.

p $x + 3x + \frac{15x}{2} = 46 \times 3$
 p $23x = 46 \times 3$
 p $x = 6$

□ Required difference
 = $\frac{15x}{2} - x = \frac{13x}{2}$
 = $\frac{13 \cdot 6}{2} = 39$ years

47. (1) Speed of the bus
 = $\frac{480}{8} = 60$ kmph

□ Speed of the train = $60 \times \frac{4}{3} = 80$ kmph

□ Speed of the car = $\frac{80}{16} \times 15 = 75$ kmph

□ Required distance = Speed \times time
 = $75 \times 6 = 450$ km.

49. (1) Let the listed price be ₹ x .

□ Discount = 30% of x
 = $\frac{30x}{100} = ₹ \frac{3x}{10}$

According to the question,

$\frac{3x}{10} = 82.5$

p $x = \frac{82.5 \cdot 10}{3} = ₹ 275$

□ Required cost price of calculator = 70% of 275

= ₹ $\frac{70 \cdot 275}{100} = ₹ 192.50$

50. (4) Let the principal be ₹ x and rate of interest be $r\%$

Case I : $\frac{x \cdot r \cdot 7}{100} = 1750$

p $xr = \frac{1750 \cdot 100}{7} = ₹ 25000$

Case II : S.I. = $\frac{x \cdot (r+2) \cdot 7}{100}$

Which cannot be determined with the help of given information.

(51-55):

51. (2) Required number of girls = $198 + 264 + 22 = 484$
52. (3) Required percentage = $\frac{216+132}{264} \times 100 \approx 132$
53. (1) Required average
 $= \frac{57+57+216}{3} = \frac{330}{2} = 110$
54. (5) Required number of students = $22 + 57 = 79$
55. (1) Required ratio = $44 : 102 = 22 : 51$
56. (1) I. $\sqrt{289x} + \sqrt{25} = 0$
 $13x + 5 = 0$
 $x = \frac{-5}{13}$
 II. $\sqrt{676y} + 10 = 0$
 $= \frac{-5}{13}$
 Clearly, $x > y$
57. (2) I. $8x^2 - 78x + 169 = 0$
 $\text{P } (2x - 13)(4x - 13) = 0$
 $\square x = \frac{13}{2} \text{ or } \frac{13}{4}$
 II. $20y^2 - 117y + 169 = 0$
 $(4y - 13)(5y - 13) = 0$
 $\square y = \frac{13}{4} \text{ or } \frac{13}{5}$
 Clearly, $x \geq y$
58. (1) I. $\frac{15+9}{\sqrt{x}} = 11\sqrt{x}$
 $\text{P } 11x = 24 \text{ P } x = \frac{24}{11}$
 II. $\frac{\sqrt{y}}{4} + \frac{5\sqrt{y}}{12} = \frac{1}{\sqrt{y}}$
 $\text{P } y = \frac{12}{8} = \frac{3}{2}$
 Clearly, $x > y$
59. (5) I. $\frac{8}{\sqrt{x}} + \frac{6}{\sqrt{x}} = \sqrt{x}$
 $\text{P } \frac{8+6}{\sqrt{x}} = \sqrt{x} \text{ P } x = 14$
 II. $y^3 = \frac{(14)^2}{\sqrt{y}} = 0$
 $\text{P } y^{\frac{7}{2}} = (14)^{\frac{7}{2}} \text{ P } y = 14$
60. (5) I. $x^2 = 208 + 233 = 441$
 $\square x = \sqrt{441} = \pm 21$
 II. $y^2 - 47 + 371 = 0$
 $\text{P } y^2 + 324 = 0$
 $\square y = \sqrt{-324} = \text{An imaginary number.}$
61. (4) Time taken in crossing each other =
 $\frac{\text{Total length of trains}}{\text{Relative speed}}$

- The information given in both statements is not sufficient as length of train A and individual speed of each train is required.
62. (4) Area of rectangle = Area of triangle.
 From the information given in both the statements, we can find area of triangle or area of rectangle. For finding length, breadth is required, which is not known.
63. (3)
64. (5) Let the unit's digit be x and ten's digit be y and $x < y$.
 \square Number = $10y + x$
 From statement I,
 $y - x = 5 \dots(i)$
 From statement II,
 $y + x = 7 \dots(ii)$
 From (i) and (ii), $(x), y$ can be calculated and two digit number can be found.
65. (4) Let the distance between A and B be z km.
 Again, let speed of boat in still water be x kmph and that of stream be y kmph.
 \square Rate downstream = $(x + y)$ kmph
 From statement I,
 $\frac{z}{x+y} = 2 \dots(i)$
 From statement II
 $\frac{z}{x-y} = 4 \dots(ii)$
66. (4) Number of books sold by store P in May = 177
 Number of books sold by store T in July = 249
 \square Required percent $\approx \frac{249 - 177}{249} \times 100$
 $\approx \frac{7200}{250} \approx 29\%$
67. (3) Required ratio
 $= (156 + 220) : (215 + 249)$
 $= 376 : 464 = 47 : 58$
68. (5) Number of books sold by stores Q, S and T in April = $208 + 187 + 175 = 570$
 Number of non-academic books sold =
 $70\% \text{ of } 570 = \frac{570 \times 70}{100} = 399$
69. (1) Number of books sold by store R in April, June and July = $216 + 235 + 278 = 729$
 \square Required average = $\frac{729}{3} = 243$
70. (4) Require difference = $(253 + 265) - (197 + 188) = 518 - 385 = 133$
- ENGLISH LANGUAGE**
96. (1) Replace 'about' by 'over'.
 97. (5)
 98. (2) Replace 'is all setting' by 'is all set to'
 99. (1) Replace 'having been installed' by 'to have been installed'.
 100. (4) Substitute 'from' to 'by'.

VOCABULARIES

| Words | Meaning in English | Meaning in Hindi |
|---------------|--|--------------------------|
| Axioms | A rule or principle that most people believe to be true | सिद्धांत |
| Consent | Agreement about something | सहमति |
| Concurrence | Agreement or a state of cooperation | सहमति, सम्मति |
| Persist | To continue to exist | कायम रहना |
| Patronage | Money and support that is given to an artist, organization, etc. | संरक्षण, आश्रय |
| Conferred | To give somebody an award, a university degree or a particular honour or right. | अर्पित करना, प्रदान करना |
| Kith and kin | Friends and relatives | परिचित एवं संबंधी |
| Affiliation | The act of becoming formally connected or joined | संबंध |
| Bemoans | To complain or say that you are not happy about something | शिकायत करना, पछताना |
| Contribute | To help to cause something to happen | योगदान देना |
| Unscrupulous | Without moral principles; not honest or fair | अनैतिक |
| Oblivious | Not aware of something | अनजान, बेबखर |
| Forge | To make an illegal copy of something in order to cheat people | छल करना |
| Abide by | To accept and act according to a law, an agreement, etc. | पालन करना |
| Transgress | To go beyond the limit of what is morally or legally acceptable | उल्लंघन करना |
| Compliance | The practice of obeying rules or requests made by people in authority. | अनुपालन |
| Drastically | In an extreme way that has a sudden, serious or violent effect on something. | भयावह रूप से |
| Shoot up | To rise suddenly by a large amount | तेजी से बढ़ना |
| Buffer stocks | A scheme planned by a government to stabilise prices in volatile markets. | सुरक्षित भंडार |
| Slew | A large number or amount of something. | ढेर, अधिक संख्या |
| Streamline | To make a system, an organization, etc. work better, especially in a way that saves money. | सरल एवं कारगर बना देना |
| Upbeat | Positive and enthusiastic; making you feel that the future will be good | आशावादी |

KD
Campus
KD Campus

2007, OUTRAM LINES, 1ST FLOOR, OPPOSITE MUKHERJEE NAGAR POLICE STATION, DELHI-110009

SBI CLERK PHASE - I MOCK TEST - 42 (ANSWER KEY)

- | | | | |
|---------|---------|---------|----------|
| 1. (4) | 26. (2) | 51. (2) | 76. (4) |
| 2. (2) | 27. (1) | 52. (3) | 77. (5) |
| 3. (4) | 28. (4) | 53. (1) | 78. (1) |
| 4. (3) | 29. (2) | 54. (5) | 79. (2) |
| 5. (1) | 30. (3) | 55. (1) | 80. (3) |
| 6. (3) | 31. (2) | 56. (1) | 81. (4) |
| 7. (5) | 32. (4) | 57. (2) | 82. (2) |
| 8. (3) | 33. (4) | 58. (1) | 83. (5) |
| 9. (4) | 34. (2) | 59. (5) | 84. (1) |
| 10. (1) | 35. (1) | 60. (5) | 85. (5) |
| 11. (2) | 36. (1) | 61. (4) | 86. (3) |
| 12. (5) | 37. (4) | 62. (4) | 87. (1) |
| 13. (2) | 38. (1) | 63. (3) | 88. (4) |
| 14. (4) | 39. (2) | 64. (5) | 89. (1) |
| 15. (5) | 40. (5) | 65. (4) | 90. (5) |
| 16. (5) | 41. (2) | 66. (4) | 91. (3) |
| 17. (4) | 42. (3) | 67. (3) | 92. (5) |
| 18. (4) | 43. (2) | 68. (5) | 93. (2) |
| 19. (2) | 44. (1) | 69. (1) | 94. (5) |
| 20. (3) | 45. (1) | 70. (4) | 95. (2) |
| 21. (5) | 46. (5) | 71. (3) | 96. (1) |
| 22. (1) | 47. (1) | 72. (1) | 97. (5) |
| 23. (1) | 48. (2) | 73. (5) | 98. (2) |
| 24. (3) | 49. (1) | 74. (5) | 99. (1) |
| 25. (2) | 50. (4) | 75. (3) | 100. (4) |

Note:- If you face any problem regarding result or marks scored, please contact 9313111777

Note:- If your opinion differs regarding any answer, please message the mock test and question number to 8860330003