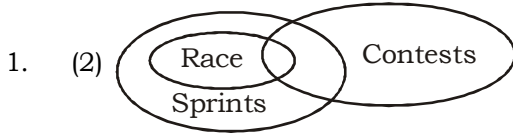
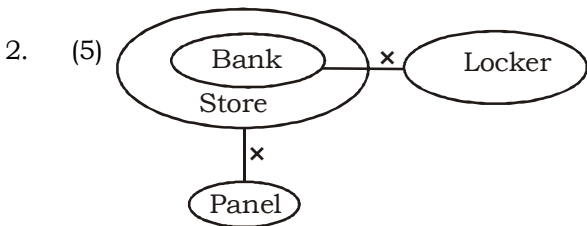


IBPS PO/Clerk PHASE-I MOCK TEST-67 (SOLUTION)

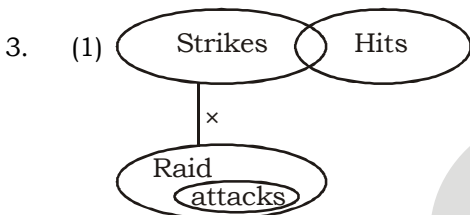
REASONING



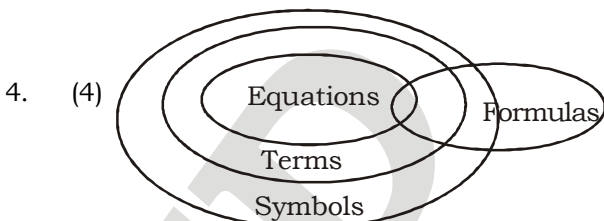
- I. ✓
II. ×



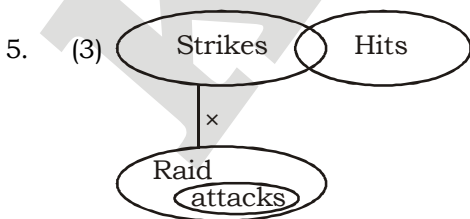
- I. ×
II. ✓



- I. ✓
II. ✓



- I. ✓
II. ×



- I. ✓
II. ✓

6. (4) **Statements :**
 $S \leq L \leq I = P > E > R$... (i)
 $L > Q$... (ii)

From (i), we get

$S \leq P$ or $P \geq S$. Thus, conclusion I is true. Again, $I > R$ is true. Hence both conclusion I and II are true.

7. (3) **Given statements :**
 $G > R \geq E = A \leq T \leq S$... (i)
 $D \leq A \leq J$... (ii)

Combining (i) and (ii), we get

$$D \leq A \leq T$$

Thus, $D \leq T$ or $T \geq D$. Hence I is true. Again, we can't compare R and S. Hence II ($R > S$) is not true.

8. (4) **Given statements :**
 $A \geq B > C \leq D \leq E < F$
 Thus, we can't compare A and E. Hence I ($A \leq E$) is not true. Again, $C \geq F$ is true. Hence II is true.

9. (1) **Given statements :**
 $G > R \geq E = A < T < S$... (i)
 $D \leq A \leq J$... (ii)

Combining (i) and (ii), we get

$$G > R \geq E = A \leq J$$

Thus, we can't compare G and J. Hence neither I ($J > G$) nor II ($J = G$) is true.

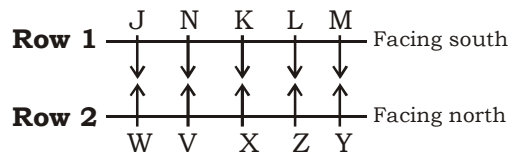
10. (2) **Given statements :**
 $S < L < I = P \geq E > R$... (i)
 $L > Q$... (ii)

Combining (i) and (ii), we get

$$Q < L < I = P \geq E$$

Thus, we can't compare E and Q. Hence II ($E \geq Q$) is not true. Again, we can't compare L and R. Hence I ($L < R$) is not true.

(11-15) :



11. (3) 12. (4) 13. (1)
 14. (3) 15. (3)

(16-20) :

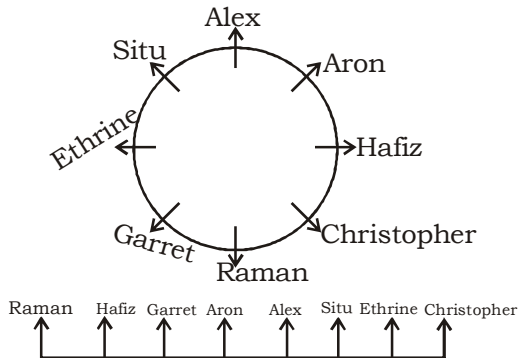
Person	Game	T-shirt	Mobile
U	Carrom	Blue	Moto G
V	Kho-Kho	Yellow	Lenovo
W	Chess	Violet	Lenovo
X	Hockey	Red	Micromax
Y	Tennis	Orange	Moto G
Z	Badminton	Green	Micromax

16. (2) 17. (1) 18. (5)
 19. (2) 20. (3)

KD
Campus
KD Campus

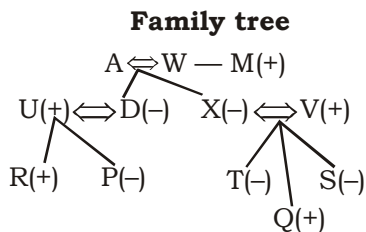
2007, OUTRAM LINES, 1ST FLOOR, OPPOSITE MUKHERJEE NAGAR POLICE STATION, DELHI-110009

(21-26) :



21. (1) 22. (2) 23. (4)
24. (3) 25. (2)
26. (2)

(27-31) :



27. (2) 28. (1) 29. (3)
30. (4) 31. (3)

(32-35) :

must adapt and change → ki la bx tu
 little better than nothing → ex qa fn rm
 change a must here → gm tu dr la
 here to adapt better → fn bx ms dr

32. (5) better ⇒ fn
 and ⇒ fn
 and ⇒ ki
 The code for 'improved' may be 'yz'.
 33. (4) gm ⇒ a
 34. (1) must bring change → op la tu
 Now,
 bring ⇒ op
 here ⇒ dr
 The code for 'peace' may be 'ov'.
 35. (2) than ⇒ cx/ qa/rm

MATHS

36. (4) ? ≈ 466 + 765 - 212 = 1019 ≈ 1020
 37. (1) ? ≈ $\frac{150 \times 150}{100} + 150$
 = 225 + 150 = 375

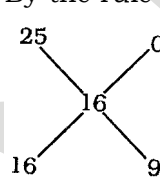
38. (4) ? ≈ $\frac{3000 \times 750}{1000} - 1400$
 = 2250 - 1400 = 850
 39. (3) ? ≈ 51 - 34 + 21 = 38 ≈ 40
 40. (5) ? ≈ $\frac{900}{30} \times \frac{90}{300} \times \frac{600}{50} = 108 \approx 110$
 41. (3) Number of employees in Teaching
 profession = $26800 \times \frac{15}{100} = 4020$
 Number of employees in Medical
 profession
 = $26800 \times \frac{27}{100} = 7236$
 Total number of employees = 4020 +
 7336 = 11256
 Number of employees in Management
 profession = $26800 \times \frac{17}{100} = ₹ 4556$
 ∴ Reqd difference = 11256 - 4556 = 6700

Quicker Method:

- Reqd difference = (15 + 27 - 17)% of 26800
 = 25% of 26800 = 6700
 42. (5) Total number of employees in
 Management profession = $26800 \times \frac{17}{100}$
 = 4556
 Number of female employees in
 Management profession = $4556 \times \frac{3}{4}$
 = 3417
 ∴ Required number of male employees in
 Management profession
 = 4556 - 3417 = 1139
 43. (2) Total number of employees from Film
 Production = $26800 \times \frac{19}{100} = 5092$
 Now, number of employees from Film
 Production who went on strike
 = $5092 \times \frac{25}{100} = 1273$
 ∴ Number of employees who have not
 participated in strike = 5092 - 1273
 = 3819

Quicker Method:

- Required number of employees who have
 not participated in strike
 $26800 \times \frac{75}{100} = 3819$

44. (4) Required number of employees who participated in both Engineering and Industries professions = $26800 \times \left(\frac{9+13}{100}\right) = 268 \times 22 = 5896$
45. (1) Total number of teachers
 $= 26800 \times \frac{15}{100} = 4020$
 Number of teachers who are not permanent
 $= 4020 \times \frac{3}{5} = 804 \times 3 = 2412$
 \therefore Number of teachers who are permanent
 $= 4020 - 2412 = 1608$
46. (5) The given number series is based on the following pattern :
 $7413 + 9 \times 1 = 7422$
 $7422 + 9 \times 2 = 7440$
 $7440 + 9 \times 3 = \mathbf{7467}$
 $7467 + 9 \times 4 = 7503$
 $7503 + 9 \times 5 = 7548$
 Hence, 7467 will replace the question mark.
47. (4) The given number series is based on the following pattern :
 $4 = 2^2$; $16 = 4^2$;
 $36 = 6^2$; $64 = 8^2$;
 $100 = 10^2$.
 $\therefore ? = 12^2 = \mathbf{144}$
 Hence, 144 will replace the question mark.
48. (1) The given number series is based on the following pattern:
 $12 \times 3 - 3 = 33$
 $33 \times 3 - 3 = 96$
 $96 \times 3 - 3 = \mathbf{285}$
 $285 \times 3 - 3 = 852$
 Hence, 285 will replace the question mark.
49. (3) The given number series is based on the following pattern :
 $70000 \div 5 = 14000$
 $14000 \div 5 = 2800$
 $2800 \div 5 = \mathbf{560}$
 $560 \div 5 = 112$
 $112 \div 5 = 22.4$
 Hence, 560 will replace the question mark.
50. (2) The given number series is based on the following pattern :
 $102 - 3 = 99$
 $99 + 5 = 104$
 $104 - 7 = 97$
 $97 + 9 = 106$
 $106 - 11 = \mathbf{95}$
 Hence, 95 will replace the question mark.
51. (3) Selling price of mixture = ₹ 20
 Cost price of mixture
 $= \frac{100}{125} \times 20 = ₹ 16$
 By the rule of alligation,

 So, required ratio = 16 : 9
52. (2) Let the total number of boys and girls be B and G respectively.
 \therefore Total score of boys = 71 B
 Total score of girls = 73 G
 Total score of the class = 71.8 (B+G)
 $\therefore 71 B + 73 G = 71.8 (B+G)$
 $\Rightarrow 0.8B = 1.2G \Rightarrow \frac{B}{G} = \frac{1.2}{0.8} = \frac{3}{2} = 3 : 2$
53. (2) Let the sum be ₹ x.
 $x \left(1 + \frac{10}{100}\right)^4 - x \left(1 + \frac{20}{100}\right)^2 = 482$
 $\Rightarrow x \left(\frac{11}{10}\right)^4 - x \left(\frac{6}{5}\right)^2 = 482$
 $\Rightarrow x (1.4641 - 1.44) = 482$
 $\Rightarrow 0.0241x = 482$
 $\Rightarrow x = \frac{482}{0.0241} = ₹ 20000$
54. (4) Let the sides of the cuboid be a, b and c.
 $\therefore ab = 12 \text{ sq. cm.}$
 $bc = 20 \text{ sq.cm.}$
 $ac = 15 \text{ sq.cm.}$
 Volume of cuboid = abc
 $= \sqrt{a^2 b^2 c^2} = \sqrt{12 \times 20 \times 15}$
 $= \sqrt{3600} = 60 \text{ cu.cm.}$

55. (3) Let the two digit number be
 $= 10y + x$.
 According to the question,
 $10y + x = 3(x + y)$
 $\Rightarrow 10y + x = 3x + 3y$
 $\Rightarrow 10y - 3y + x - 3x = 0$
 $\Rightarrow 7y - 2x = 0 \dots(i)$
 and $10y + x + 45 = 10x + y$
 $\Rightarrow 9x - 9y = 45$
 $\Rightarrow 9(x - y) = 45$
 $\Rightarrow x - y = \frac{45}{9} = 5$
 $\Rightarrow x = y + 5 \dots(ii)$
 Now, $7y - 2x = 0$
 $\Rightarrow 7y - 2(y + 5) = 0$
 [From equation (ii)]
 $\Rightarrow 7y - 2y - 10 = 0$
 $\Rightarrow 5y = 10$
 $\Rightarrow y = \frac{10}{5} = 2$
 \therefore From equation (ii),
 $x = 2 + 5 = 7$
 \therefore Number = $2 \times 10 + 7 = 27$

Note : This problem can be easily solved by hit and trial method out of the given alternatives.

56. (3) Average = $\frac{210 + 204 + 231 + 231}{4}$
 $= \frac{876}{4} = 219$
57. (1) Total number of girls = $70 + 117 + 54 + 129 + 136 + 176 = 682$
58. (5) Different = $225 - 225 = 0$
59. (4) Let the total number of students be x .
 \therefore Boys = $\frac{44x}{100}$ and girls = $\frac{56x}{100}$
 Different = $\frac{12x}{100} = 30$
 $\therefore x = \frac{3000}{12} = 250$
 \therefore Boys = $\frac{44}{100} \times 250 = 110$
 Similarly,
 Total students = $\frac{132 \times 100}{40} = 330$
 Girls = $\frac{30 \times 330}{100} = 99$
 \therefore Ratio = $\frac{110}{99} = \frac{10}{9}$

60. (4) Students from $F_{1986} = 375$
 Students from $C_{1986} = 250$
 $\% = \frac{375}{250} \times 100 = 150\%$
61. (2) $\frac{A \times 90}{100} = \frac{30 \times B}{100}$
 $\Rightarrow B = 3A$
 $\Rightarrow \frac{A \times x}{100} = 3A$
 $\Rightarrow x = 3 \times 100 = 300$
62. (2) By question, number of ways of out comes when two dice are thrown = $n(S) = 36$ and possible cases of event when the sum of numbers on two dice is a prime numbers, are
 $(1, 1), (1, 2), (1, 4), (1, 6), (2, 1), (2, 3), (2, 5), (3, 2), (3, 4), (4, 1), (4, 3), (5, 2), (5, 6), (6, 1), (6, 5)$.
 Number of events = $n(A) = 15$
 Hence, required probability
 $= \frac{n(A)}{n(S)} = \frac{15}{36} = \frac{5}{12}$
63. (1) According to the question,
 SP of 12 marbles = ₹ 1, loss = 20%
 CP of 12 marbles
 $= ₹ \frac{1}{0.8} = ₹ 1.25$
 Now, SP of 12 marbles to gain of 20%
 $CP \times 1.2 = 1.25 \times 1.2 = ₹ 1.5$
 It means in order to gain 20%, he should sell 12 marbles for ₹ 1.5
 Thus, he should sell $\frac{12}{1.5} = 8$ marbles for a rupee.
64. (3) If the C.P. of table be ₹ x .
 then
 $\frac{400 - 350}{x} \times 100 = 5$
 $\Rightarrow 50 \times 100 = 5x$
 $\Rightarrow x = ₹ 1000$
65. (3) Let the work is completed in x days.
 Work done by (A + B) in 1 day = $\frac{1}{10}$ work
 Work done by (B + C) in 1 day = $\frac{1}{18}$ work
 A's 5 day's work + B's 10 day's work + C's 15 day's work = 1
 (A + B)'s 5 day's work + (B + C)'s 5 day's work + C's 10 day's work = 1
 $\frac{5}{10} + \frac{5}{18} - \frac{10}{x} = 1$
 $\Rightarrow x = 45$

66. (5) I. $\frac{15}{\sqrt{x}} - \frac{9}{\sqrt{x}} = \sqrt{x}$

$\Rightarrow \frac{6}{\sqrt{x}} = \sqrt{x} \Rightarrow x = 6$

II. $y^{10} = (36)^5 = (6^2)^5 = 6^{10}$

$\Rightarrow y = 6$

Clearly $x = y$

67. (1) I. $5x + 2y = 96$

II. $3(7x + 5y) = 489$

$\Rightarrow 7x + 5y = 489 \div 3 = 163$

By equation I $\times 5$ - equation II $\times 2$,

$25x + 10y - 14x - 10y = 480 - 326$

$\Rightarrow 11x = 154$

$\Rightarrow x = \frac{154}{11}$

$\Rightarrow x = 14$

From equation I,

$14 \times 5 + 2y = 96$

$\Rightarrow 2y = 96 - 70 = 26$

$\Rightarrow y = 13$

Clearly, $x > y$

68. (5) I. $(441)^{\frac{1}{2}} \cdot x^2 - 111 = 225$

$\Rightarrow 21x^2 = 225 + 111 = 336$

$\Rightarrow x^2 = \frac{336}{21} = 16$

$\Rightarrow x = \pm 4$

II. $\sqrt{121}y^2 + (6)^3 = 260$

$\Rightarrow 11y^2 + 216 = 260$

$\Rightarrow 11y^2 = 260 - 216 = 44$

$\Rightarrow y^2 = \frac{44}{11} = 4$

$\Rightarrow y = \pm 2$

69. (3) I. $17x = 169 + 14 + 25 + 4x$
 $\Rightarrow 13x = 208$

$\Rightarrow x = \frac{208}{13} = 16$

II. $9y - 345 = 4y - 260$

$\Rightarrow 9y - 4y = 345 - 260$

$\Rightarrow 5y = 85$

$\Rightarrow y = 17$

Clearly, $x < y$

70. (3) I. $3x^2 - 13x + 14 = 0$

$\Rightarrow 3x^2 - 7x - 6x + 14 = 0$

$\Rightarrow x(3x - 7) - 2(3x - 7) = 0$

$\Rightarrow (x - 2)(3x - 7) = 0$

$x = 2$ or $\frac{7}{3}$

II. $y^2 - 7y + 12 = 0$

$\Rightarrow y^2 - 4y - 3y + 12 = 0$

$\Rightarrow y(y - 4) - 3(y - 4) = 0$

$\Rightarrow (y - 3)(y - 4) = 0$

$\Rightarrow y = 3$ or 4

Clearly, $x < y$

ENGLISH LANGUAGE

71. (5) Refer the second-last sentence of the second paragraph.

72. (1) Refer "..... what we should do when robots do arrive"

73. (4) The inventor thought the imaginary death rays to have been existing already.

74. (2) Refer the opening sentences of the third paragraph.

75. (5) These heroes would not have achieved their feat without their robot companions.

96. (3) Replace 'appreciating' with 'appreciated'. (The verb coming after 'and' or 'but' takes the same form as its counterpart before 'and' or 'but' (admired))

97. (1) Replace 'had' with 'would have' as the sentence is past conditional (if)-

98. (1) Place 'not only' after 'the judges'. (Position of not only-but also)

99. (3) Replace 'indefinite' with 'indefinitely' as it is qualifying a verb.

VOCABULARIES

Words	Meaning in English	Meaning in Hindi
Speculation	The forming of a theory or conjecture without firm evidence	परिकल्पना
Extensive	Covering or affecting a large area.	व्यापक
Vivid	Clear images in the mind.	सुस्पष्ट
Obscure	Not discovered or known about; uncertain.	अस्पष्ट
Paraphernalia	Miscellaneous articles, especially the equipment activity needed for a particular.	सामग्री
Misleading	Giving the wrong idea or impression.	भ्रामक
Province	A principal administrative division of certain countries or empires.	प्रांत
Elaborate	Involving many carefully arranged parts or details; detailed and complicated in design and planning.	विस्तृत
Prototypical	Connected with the first design of something from which other forms are copied or developed	मूल प्ररूप संबंधी
Candid	Truthful and straightforward; frank.	खरा
Abated	Become less intense	कम करना
Trivialised	Make (something) seem less important, significant, or complex than it really is.	महत्वहीन बनाना
Mitigate	Make less severe, serious, or painful	कम करना
Acquitted	Free (someone) from a criminal charge by a verdict of not guilty.	बरी करना

KD
Campus
KD Campus

2007, OUTRAM LINES, 1ST FLOOR, OPPOSITE MUKHERJEE NAGAR POLICE STATION, DELHI-110009

IBPS PO/Clerk PHASE -I MOCK TEST - 67 (ANSWER KEY)

- | | | | |
|---------|---------|---------|----------|
| 1. (2) | 26. (2) | 51. (3) | 76. (3) |
| 2. (5) | 27. (2) | 52. (2) | 77. (2) |
| 3. (1) | 28. (1) | 53. (2) | 78. (1) |
| 4. (4) | 29. (3) | 54. (4) | 79. (3) |
| 5. (3) | 30. (4) | 55. (3) | 80. (4) |
| 6. (4) | 31. (3) | 56. (3) | 81. (3) |
| 7. (3) | 32. (5) | 57. (1) | 82. (3) |
| 8. (4) | 33. (4) | 58. (5) | 83. (1) |
| 9. (1) | 34. (1) | 59. (4) | 84. (5) |
| 10. (2) | 35. (2) | 60. (4) | 85. (4) |
| 11. (3) | 36. (4) | 61. (2) | 86. (1) |
| 12. (4) | 37. (1) | 62. (2) | 87. (4) |
| 13. (1) | 38. (4) | 63. (1) | 88. (3) |
| 14. (3) | 39. (3) | 64. (3) | 89. (2) |
| 15. (3) | 40. (5) | 65. (3) | 90. (5) |
| 16. (2) | 41. (3) | 66. (5) | 91. (1) |
| 17. (1) | 42. (5) | 67. (1) | 92. (4) |
| 18. (5) | 43. (2) | 68. (5) | 93. (2) |
| 19. (2) | 44. (4) | 69. (3) | 94. (5) |
| 20. (3) | 45. (1) | 70. (3) | 95. (5) |
| 21. (1) | 46. (5) | 71. (5) | 96. (3) |
| 22. (2) | 47. (4) | 72. (1) | 97. (1) |
| 23. (4) | 48. (1) | 73. (4) | 98. (1) |
| 24. (3) | 49. (3) | 74. (2) | 99. (3) |
| 25. (2) | 50. (2) | 75. (5) | 100. (5) |

Note:- If you face any problem regarding result or marks scored, please contact 9313111777

Note:- If your opinion differs regarding any answer, please message the mock test and question number to 8860330003