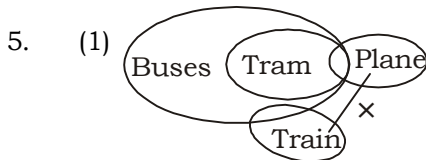
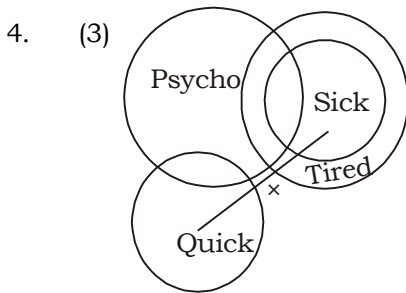
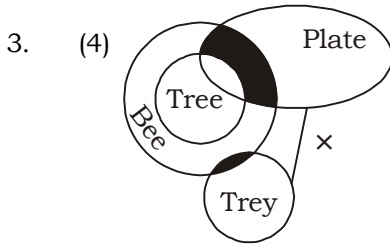
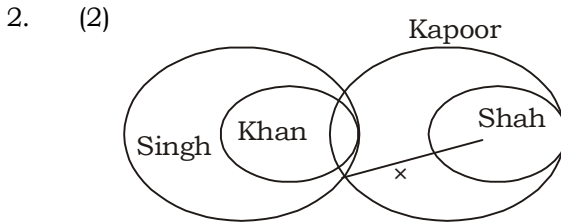
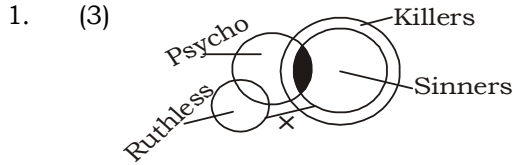
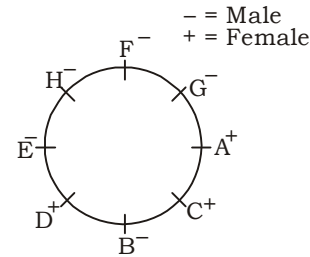
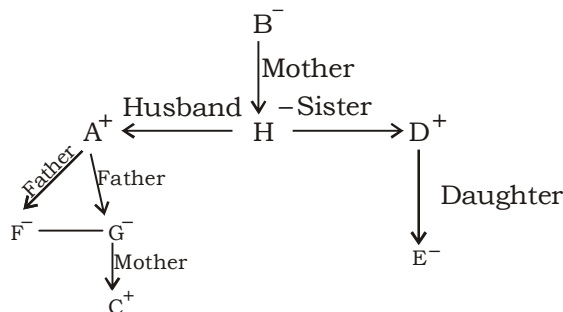


BANK PO PHASE-I MOCK TEST-14 (SOLUTION)

REASONING



(6-10):



6. (4) 7. (2) 8. (3)
 9. (3) 10. (2) 11. (3)
 12. (2) 13. (1) 14. (2)
 15. (1) 16. (4)

17. (3) Input: trees 18 27 desk are 91 hour zero 31 16 chairs

Step 1 91 trees 18 27 desk are hour zero 31 16 chairs

Step 2 91 are trees 18 27 desk hour zero 31 16 chairs

Step 3 91 are 31 trees 18 27 desk hour zero 16 chairs

Step 4 91 are 31 chairs trees 18 27 desk hour zero 16

18. (5)
 19. (5) We can't deduce an input or previous step for a given arrangement.

20. (4) Input: Show 51 37 now for 82 49 goot

Step 1 82 show 51 37 now for 49 goot

Step 2 82 for show 51 37 now 49 goot

Step 3 82 for 51 show 37 now 49 goot

Step 4 82 for 51 goot show 37 now 49

Step 5 82 for 51 goot 49 show 37 now

Step 6 82 for 51 goot 49 now show 37

Step 7 82 for 51 goot 49 now 37 show

21. (2)
Step 4 58 box 47 dew 15 21 town pot.
Step 5 58 box 47 dew 21 15 town pot.
Step 6 58 box 47 dew 21 pot 15 town.

(22-26)

South Facing ↓ P T Q V S R
 North Facing ↑ C D E F A B

22. (3) 23. (5) 24. (2)
 25. (1) 26. (5)

(27-31):

@ Means ≥ % Means = * Means <
 # Means > \$ Means ≤

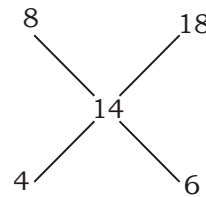
27. (1) T ≥ V > M = F
 I. T > M True
 II. T ≥ F False
 28. (5) R = L ≤ N < F
 I. F > R True
 II. R ≤ N True
 29. (1) H > I ≥ J ≤ P
 I. H > J True
 II. H > P False

30. (3) $L < D > K \leq J$
 I. $L > K$ False
 II. $L \leq K$ False
31. (2) $Q \leq W = E \geq K$
 I. $Q \leq K$ False
 II. $W \geq K$ True
32. (2) 33. (5) 34. (1)
35. (1)

MATHS

36. (3) $\frac{7428}{346} \times 12 = 257.6 \approx 258$
37. (5)
38. (2) $\{[a^2 b^2 = (a + b)(a - b)]\} = 57.42 \times 14.86 \approx 853$
39. (4) $\sqrt[3]{769} \approx 9$
 $\sqrt{478} \approx 22$
 $9 \times 22 = 198 \approx 200$
40. (1)
41. (3) $80 \times 60 \times \frac{13}{2} = 15 \times 1000 \times \frac{20}{100} \times \frac{20}{100} \times h$
 $h = 52$ hrs.
42. (1) Let x be the no of wickets before last match
 $12.4x + 26 = (x + 5) 12$
 $x = 85$
43. (3) Let $P = 100, t = 6$ year, S.I. = 60
 $60 = \frac{100 \times R \times 6}{100} \Rightarrow r = 10\%$
 $C.I = 12000 \left[\left(1 + \frac{10}{100} \right)^3 - 1 \right]$
 $= 3972$
44. (2) $r = 5\%$
 Difference = $\frac{1200 \times 5^2}{100^2}$
 $= 3 \text{ ₹}$
45. (3) $3 \times 12 : 5 \times 12 : 5 \times 6 \Rightarrow 6 : 10 : 5$
46. (5) The series is
 $+1 + 10, \times 2 - 10, \times 3 + 10, \times 4 - 10, \times 5 + 10$
 $130 \times 4 - 10 = 520 - 10 = 510$
47. (1) The series is $\div 2 + 1$ and so on.....
 $\frac{25}{2} + 1 = 13.5$

48. (2)
49. (5) The series is
 $-3, -9, -27, -81, -243$
 so, $264 - 243 = 21$
50. (4) The series is
 $+2^2, +4^2, +6^2, +8^2, +10^2, \dots$
 $302 + 6^2 = 338$
51. (4)
52. (3)
53. (3) $\frac{6!}{2!} = 360$
54. (1) $\frac{{}^5C_2}{{}^7C_2} = \frac{10}{21}$
55. (3)



- $2 : 3$
- $\Rightarrow 5$ unit = 1000 kg.
 $\Rightarrow 1$ unit = 200
 $\Rightarrow 3$ unit = 600 kg.
56. (1) 2A 30
 3B 20 60
 6C 10
 ABC discharge chemical in 1 min = $6 + 3 + 2 = 11$.
 So, proportion of R = $\frac{6 \times 3}{11 \times 3} = \frac{6}{11}$
57. (4) $x - y = \frac{2}{1} = 2$ kmph
 $x + y = \frac{1}{10} = 6$ kmph
 $\frac{1}{60}$
 $x = 4$ kmph
 time (taken by boatman) = $\frac{5}{4}$ hr = 75 min.

58. (4) Total income of A = 43 lakh

$$\text{Monthly income of A} = \frac{43.3}{7 \times 12} = ₹ 51547$$

59. (3) $\frac{425}{510} = \frac{5}{6} = 5 : 6$

60. (3) $(36.565 - 30.2)$ lakhs = ₹ 6,36,500

61. (4) $\frac{6425}{47810} \times 100 \times 7 \approx 94\%$

62. (5) $\frac{\text{Total income}}{\text{No of years}} = \frac{29.05}{7} = 4.15$ lakh

63. (5) $\frac{3}{2}x^2 - \frac{23}{6}x + \frac{7}{3} = 0 \quad y^2 = \sqrt{\frac{121}{36}}$

$$9x^2 - 23x + 14 = 0 \quad = \frac{11}{6}$$

$$x = \frac{14}{9} \text{ or } 1$$

$$= x < y$$

64. (1) $6x^2 - 29x - 42 = 0 \quad y^2 = 144$

$$x = \frac{36}{6}, \frac{-7}{6} \quad y = \pm 12$$

$$x = 6 \text{ or } \frac{-7}{6}$$

So, relation can't be established

65. (1) $\frac{5}{7}x^2 - \frac{41}{28}x + \frac{3}{4} = 0 \quad y = \sqrt{1296} + \sqrt{2401}$

$$20x^2 - 41x + 21 = 0 \quad y = 36 + 49$$

$$x = \frac{21}{20} \text{ or } \frac{20}{20} \quad y^2 = 85$$

$$x = \frac{21}{20} \text{ or } 1 \quad y = \pm 9.22$$

66. (4) The difference is

$$127.7 - 111 = 16.7$$

$$16.7 \times 1000 = 16,700$$

67. (2)

68. (3) $\frac{90}{86} = \frac{45}{43}$

69. (1) $\frac{50}{148} \times 100 = \frac{100}{3} = 33.3\% \approx 34\%$

70. (5) $\frac{154.5}{4} \times 100 \approx 38625$

ENGLISH

71. (2) 72. (4) 73. (2)

74. (3) 75. (4) 76. (1)

77. (1) 78. (5) 79. (3)

80. (5)

(81-85): BAECFD;

81. (1) 82. (2) 83. (3)

84. (2) 85. (5) 86. (2)

87. (3) 88. (1) 89. (3)

90. (2) 91. (4) 92. (2)

93. (3) 94. (4) 95. (5)

96. (4) Replace 'has' with 'have'.

97. (2) Replace 'and' with 'nor'.

98. (3) Replace 'preventive' with 'preventable'.

99. (1) Replace 'which' with 'that'.

100. (3) Replace 'believe' with 'believes'.

Vocabularies

Word	Meaning in English	Meaning in Hindi
Aboriginal	Of or relating to the native people of Australia	ऑस्ट्रेलियाई आदिवासी
Distinct	Strong and definite	विशिष्ट
Atonement	the act of showing you are sorry for doing something wrong in the past	प्रायश्चित्त, क्षतिपूर्ति
Subjugated	by the use of force : to conquer and gain the obedience of a group of people, a country, etc.	वशीभूत
Indigenous	Produced, living, or existing naturally in a particular region or environment	स्वदेशी, मूल निवासी
Dissenters	A person who does not agree with opinions that are officially or generally accepted	संप्रदाय विरोधी
Overcome	To defeat (someone or something)	काबू पाना, पराजित करना
Authentic	Real or genuine : not copied or false	विशुद्ध
Termites	A kind of soft, white insect that lives in groups, eats wood, and causes a lot of damage to wooden structures	दीमक
Render	To cause (someone or something) to be in a specified condition	बदल देना, रूपांतरित करना
Surge	To move very quickly and suddenly in a particular direction	उमड़ना, आगे बढ़ना
Outset	The start or beginning of something	शुरूआत, आरंभ
Gush	To flow out very quickly and in large amounts	बह निकलना
Feigned	To pretend that you have a particular feeling or that you are ill/sick, tired, etc.	झूठ
Substantive	Dealing with real, important or serious matters	मूलभूत, वास्तविक
Illegitimate	Born to a father and mother who are not married	नाजायज
Pronouncements	An official public statement	घोषणा, मत
Legislations	A law or set of laws made by a government	कानून, विधान
Allegedly	Accused of having done something wrong or illegal but not yet proven guilty	कथित रूप से
Unequivocally	Having very strong and clear : not showing or allowing any doubt	निस्संदेह, स्पष्ट रूप से
Hypothesis	An idea or theory that is not proven but that leads to further study or discussion	अवधारणा, परिकल्पना
Jurisprudence	The study of law	विधिशास्त्र
Witchcraft	Magical things that are done by witches : the use of magical powers obtained especially from evil spirits	जादू-टोना, इंद्रजाल



KD Campus Pvt. Ltd

2007, OUTRAM LINES, 1ST FLOOR, OPPOSITE MUKHERJEE NAGAR POLICE STATION, DELHI-110009

BANK PO PHASE -I MOCK TEST - 14 (ANSWER KEY)

- | | | | |
|---------|---------|---------|----------|
| 1. (3) | 26. (5) | 51. (4) | 76. (1) |
| 2. (3) | 27. (1) | 52. (3) | 77. (1) |
| 3. (4) | 28. (5) | 53. (3) | 78. (5) |
| 4. (3) | 29. (1) | 54. (1) | 79. (3) |
| 5. (1) | 30. (3) | 55. (3) | 80. (5) |
| 6. (4) | 31. (2) | 56. (1) | 81. (1) |
| 7. (2) | 32. (2) | 57. (4) | 82. (2) |
| 8. (3) | 33. (5) | 58. (4) | 83. (3) |
| 9. (3) | 34. (1) | 59. (3) | 84. (2) |
| 10. (2) | 35. (5) | 60. (3) | 85. (5) |
| 11. (4) | 36. (3) | 61. (4) | 86. (2) |
| 12. (2) | 37. (5) | 62. (5) | 87. (3) |
| 13. (1) | 38. (2) | 63. (5) | 88. (1) |
| 14. (2) | 39. (4) | 64. (1) | 89. (3) |
| 15. (1) | 40. (1) | 65. (1) | 90. (2) |
| 16. (4) | 41. (3) | 66. (4) | 91. (4) |
| 17. (3) | 42. (1) | 67. (2) | 92. (2) |
| 18. (5) | 43. (3) | 68. (3) | 93. (3) |
| 19. (5) | 44. (2) | 69. (1) | 94. (4) |
| 20. (4) | 45. (3) | 70. (5) | 95. (5) |
| 21. (2) | 46. (5) | 71. (2) | 96. (4) |
| 22. (3) | 47. (1) | 72. (4) | 97. (2) |
| 23. (5) | 48. (2) | 73. (2) | 98. (3) |
| 24. (2) | 49. (5) | 74. (3) | 99. (1) |
| 25. (1) | 50. (4) | 75. (4) | 100. (3) |

Note:- If you face any problem regarding result or marks scored, please contact 9313111777

Note:- If your opinion differs regarding any answer, please message the mock test and question number to 8860330003